

DEFENDER

The Defender is an Independent Leg Cantilever Jack-Up
with operational history in South America and the Gulf of Mexico.



GENERAL (U.S.)

Built	2007 Keppel AmFELS
Design	LeTourneau Super 116C Independent Leg Cantilever
Flag/Class	Singapore / ABS
Dimensions	243 ft Long / 206 ft Wide / 26 ft Deep 298 ft long including Heliport
Cantilever Envelope	70 ft x 15 ft x 15 ft
Draft	16 ft Transit
Displacement	25,800 kips at Load line
Variable Load	4,435 kips Transit 6,014 kips Drilling
Accommodations	102 Persons
Helideck	73 ft across flats, designed for Sikorsky S-61N, max helicopter gross weight 20,500 lbs (20.5 kips)
Max. Water Depth	Up To 350 ft
Max. Drilling Depth	30,000 ft
Legs	3x 477 ft square truss 420 ft usable below hull
Legs Spacing	142 ft Transverse 129 ft Longitudinal
Spud cans	46 ft Diameter
Jacking System	LeTourneau 16x Pinions / Leg
Mooring Winches	2x NOV AmClyde JU-36, 50 HP, 50 kips pull
Mooring Lines	2x 2,000 ft 1 ^{1/2} " Diameter IWRC
Anchors	2x Flipper Delta, 11 kips

STORAGE CAPACITIES

Fuel	2,024 bbls
Drill Water	11,300 bbls
Potable Water	1,658 bbls
Liquid Mud	2,270 bbls
Base Oil	1,124 bbls
Brine	734 bbls
Bulk Bentonite / Barite	6,800 ft ³
Bulk Cement	5,100 ft ³
Sack Storage	5,000 Sacks

DRILLING PACKAGE

Top Drive	NOV TDS-8SA, rated for 1,500 kips hoisting capacity, max continuous torque 62,500 lbf-ft
Drawworks	National 1625 UDBE, 1 ^{5/8} " drill line. Maximum line pull: 12 lines of 1,725 kips
Rotary Table	NOV-495, 49 ^{1/2} ", 1,500 kips
Tubular Handling	IR NOV ST-120, M/U 100 klbf-ft
Derrick	NOV Drecto 170 ft tall with 32 ft x 35 ft base, 2,000 kips gross nominal capacity
Mud Pumps	3x LEWCO w-2214, 2,200 HP
HP Mud System	Rated for 7,500 psi
Shale Shakers	4x NOV-Brandt Quad VSM 300

WELL CONTROL

BOP (Low Pressure)	1x Annular Shaffer, 21 ^{1/4} ", 2,000 psi 2x Ram Cameron type U, 21 ^{1/4} ", 2,000 psi 1x Blind/Shear ram Cameron, 20 ^{3/4} ", 3,000 psi
BOP (High Pressure)	1x Annular Shaffer, 13 ^{5/8} ", 10,000 psi 2x Double Cameron type U, 13 ^{5/8} ", 15,000 psi
Diverter	1x Shaffer spherical, 30", 1,000 psi
BOP Handling	2x Ingersoll-Rand 170 kips hoist
Choke & Kill Manifold	WOM 15,000 psi
Conductor Tensioning	Claxton Hydraulic 4 x lift points, total tension 440 kips

CRANES

Primary Cranes	1x LeTourneau PCM120SS, 120 ft boom, Port 83.3 kips @ 25 ft radius Main boom, 9.0 kips @ 128 ft radius Fast line
	2x LeTourneau PCM120SS, 100 ft boom, 98.4 kips @ 22 ft radius Main boom, 15.0 kips @ 108 ft radius Fast line, STBD and AFT

POWER

Main Engines	4x Caterpillar 3516B HD 2,150 HP Diesel Engines
Main Generators	4x Baylor 2,011 HP
Emergency Power	1x Caterpillar 3516B HD 2,150 HP Diesel Engine (Separate From 4 Main Engines)

Further information: +52 938 135 75 70

The above information is intended for general reference only. All equipment and specifications are subject to change at any time. Revised on 9th April 2026.

DEFENDER

The Defender is an Independent Leg Cantilever Jack-Up
with operational history in South America and the Gulf of Mexico.



GENERAL (METRIC)

Built	2007 Keppel AmFELS
Design	LeTourneau Super 116C Independent Leg Cantilever
Flag/Class	Singapore / ABS
Dimensions	75.7 m Long / 63 m Wide / 7.9 m Deep 90.8 m long including Heliport
Cantilever Envelope	21.4 m x 4.6 m x 4.6 m
Draft	4.9 m Transit
Displacement	11,700 mt at Load line
Variable Load	2,012 mt Transit 2,728 mt Drilling
Accommodations	102 Persons
Helideck	22.25 m across flats, designed for Sikorsky S-61N, max helicopter gross weight 9.3 mt
Max. Water Depth	Up To 106.7 m
Max. Drilling Depth	9,144 m
Legs	3x 145.5 m square truss 128 m usable below hull
Legs Spacing	43.3 m Transverse 39.3 m Longitudinal
Spud cans	14 m Diameter
Jacking System	LeTourneau 16x Pinions / Leg
Mooring Winches	2x NOV AmClyde JU-36, 67 kW, 22.7 mt pull
Mooring Lines	2x 609.6 m 38.1 mm Diameter IWRC
Anchors	2x Flipper Delta, 5 mt

STORAGE CAPACITIES

Fuel	322 m ³
Drill Water	1,797 m ³
Potable Water	264 m ³
Liquid Mud	361 m ³
Base Oil	179 m ³
Brine	117 m ³
Bulk Bentonite / Barite	193 m ³
Bulk Cement	144 m ³
Sack Storage	5,000 Sacks

DRILLING PACKAGE

Top Drive	NOV TDS-8SA, rated for 680 mt hoisting capacity, max continuous torque 84,739 N·m
Drawworks	National 1625 UDBE, 4.12 cm drill line. Maximum line pull: 12 lines of 784 mt
Rotary Table	NOV-495, 1.25 m, 680 mt
Tubular Handling	IR NOV ST-120, M/U 135 kN·m
Derrick	NOV Dresco 51.8 m tall with 9.75 m x 10.7 m base, 909 mt gross nominal capacity
Mud Pumps	3x LEWCO w-2214, 1,633 kW
HP Mud System	Rated for 517 bar
Shale Shakers	4x NOV-Brandt Quad VSM 300

WELL CONTROL

BOP (Low Pressure)	1x Annular Shaffer, 53.9 cm, 137 bar 2x Ram Cameron type U, 53.9 cm, 137 bar 1x Blind/Shear ram Cameron, 52.7 cm, 207 bar
BOP (High Pressure)	1x Annular Shaffer, 34.6 cm, 689 bar 2x Double Cameron type U, 34.6 cm, 1,034 bar
Diverter	1x Shaffer spherical, 76.20 cm, 69 bar
BOP Handling	2x Ingersoll-Rand 75 mt hoist
Choke & Kill Manifold	WOM 1,034 bar
Conductor Tensioning	Claxton Hydraulic 4 x lift points, total tension 200 mt

CRANES

Primary Cranes	1 x LeTourneau PCM120SS, 36.6 m boom, Port 37.8 mt @ 7.6 m radius Main boom, 4.1 mt @ 39.0 m radius Fast line. 2 x LeTourneau PCM120SS, 30.5 m boom, 44.6 mt @ 6.7 m radius Main boom, 6.8 mt @ 32.9 m radius Fast line, STBD and AFT
----------------	--

POWER

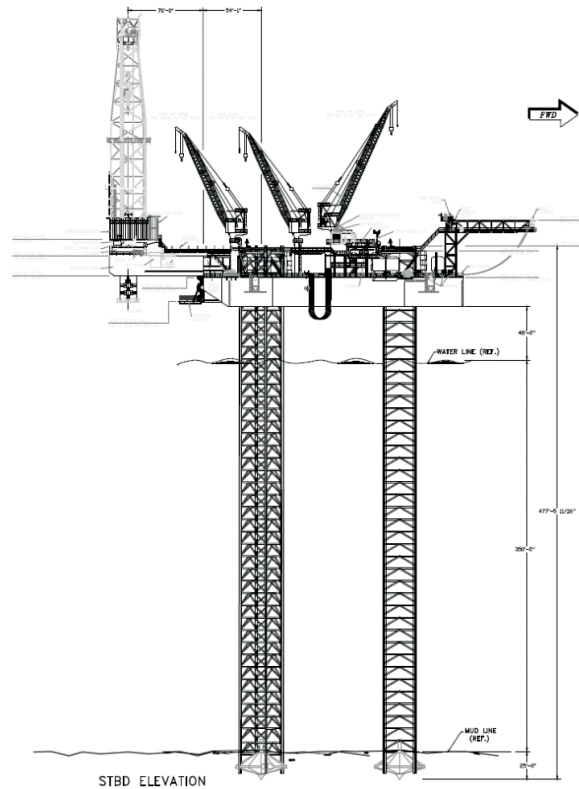
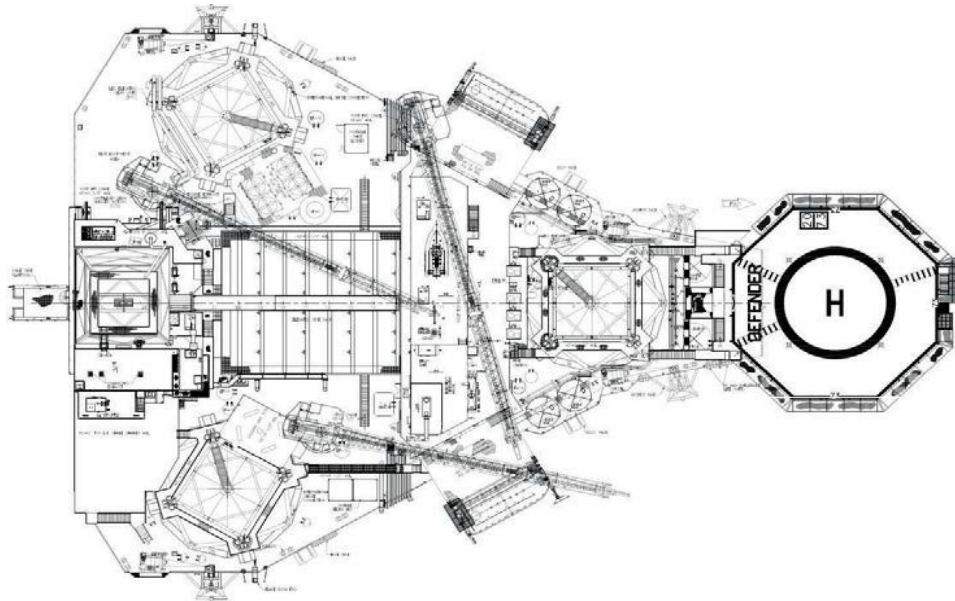
Main Engines	4 x Caterpillar 3516B HD 1,603 kW Diesel Engines
Main Generators	4 x Baylor 1,500 kW
Emergency Power	1 x Caterpillar 3516B HD 1,603 kW Diesel Engine (In addition to 4 Main Engines)

Further information: +52 938 135 75 70

The above information is intended for general reference only. All equipment and specifications are subject to change at any time. Revised on 9th April 2026.

DEFENDER

The Defender is an Independent Leg Cantilever Jack-Up
with operational history in South America and the Gulf of Mexico.



Further information: +52 938 135 75 70

The above information is intended for general reference only. All equipment and specifications are subject to change at any time. Revised on 9th April 2026.