

DEFENDER

The Defender is an Independent Leg Cantilever Jack-Up with operational history in Asia and the Gulf of Mexico.



GENERAL (U.S.)

Built	2007 Keppel AmFELS
Design	LeTourneau Super 116C Independent Leg Cantilever
Flag/Class	Singapore / ABS
Dimensions	243 ft Long / 206 ft Wide / 26 ft Deep 298 ft long including Heliport
Cantilever Envelope	70 ft x 15 ft x 15 ft
Draft	16 ft Transit
Displacement	25,800 kips at Load line
Variable Load	4,432 kips Transit 6,011 kips Drilling
Accommodations	102 Persons
Helideck	S61N & S92
Max. Water Depth	Up To 350 ft
Max. Drilling Depth	30,000 ft
Legs	3 x 477 ft Square Truss 420 ft Useable Below Hull
Legs Spacing	142 ft Transverse 129 ft Longitudinal
Spud cans	46 ft Diameter
Jacking System	LeTourneau 16 x Pinions / Leg
Mooring Winches	2 x NOV Amclyde JU-36 50 HP 50 kips Pull
Mooring Lines	2 x 2,000 ft 1-1/2" Diameter IWRC
Anchors	2 x Flipper Delta 11 kips

STORAGE CAPACITIES

Fuel	2,024 bbls
Drill Water	11,300 bbls
Potable Water	1,658 bbls
Liquid Mud	3,046 bbls
Base Oil	1,124 bbls
Brine	734 bbls
Bulk Bentonite / Barite	6,800 ft ³
Bulk Cement	5,100 ft ³
Sack Storage	5,000 Sacks

DRILLING PACKAGE

Top Drive	NOV TDS-8SA Rated for 1500 kips Hoisting Capacity Max. Continuous Torque 62,500 lbf-ft
Drawworks	National 1625 UBDE w/ 1-5/8" Drill Line. Maximum Line Pull: 12 Lines of 1725 kips
Rotary Table	NOV-495, 49.5", 1,500kips
Tubular Handling	IR NOV ST-120, M/U 100klbf-ft
Derrick	NOV Dresco 170 ft Tall with 32 ft x 35 ft Base 2000 kips Gross Nominal Capacity
Mud Pumps	3 x LEWCO w-2214, 2,200 HP
HP Mud System	Rated for 7,500 psi
Shale Shakers	4 x Quad VSM 300

WELL CONTROL

BOP (Low Pressure)	1 X Annular Shaffer Spherical 21 1/4" - 2000 psi 2 x Ram Cameron Type U 21 1/4" - 2000 psi 1 X Blind/Shear ram Cameron 20 3/4" - 3000 PSI
BOP (High Pressure)	1 x Annular Shaffer Spherical 13 5/8" - 10,000 psi 2 x double ram Cameron Type U 13-5/8" 15,000 psi
Diverter	1 x Shaffer Spherical 30" 1,000 psi
BOP Handling	2 x Ingersoll-Rand 170 kips Hoist
Choke & Kill Manifold	WOM 15,000 psi
Conductor Tensioning	Claxton Hydraulic 4 x Lift Points Total Tension 440 kips

CRANES

Primary Cranes	1 x LeTourneau PCM120SS, 120ft boom, Port 83.3 kips @ 25 ft Main boom, 12,75 kips @ 120 ft Auxiliary boom. 2 x LeTourneau PCM120SS, 100ft boom, 98.4 kips @ 22 ft, Main boom, 20 kips @ 100 ft Auxiliary boom, STBT and AFT
----------------	--

POWER

Main Engines	4 x Caterpillar 3516B HD 2,150 HP Diesel Engines
Main Generators	4 x Baylor 2,011 HP
Emergency Power	1 x Caterpillar 3516B HD 2,150 HP Diesel Engine (Separate From 4 Main Engines)

Further information: +52 938 135 75 70

The above information is intended for general reference only. All equipment and specifications are subject to change at any time. Revised December 6th, 2024

DEFENDER

The Defender is an Independent Leg Cantilever Jack-Up with operational history in Asia and the Gulf of Mexico.



GENERAL (METRIC)

Built	2007 Keppel AmFELS
Design	LeTourneau Super 116C Independent Leg Cantilever
Flag/Class	Singapore / ABS
Dimensions	75.7 m Long / 63 m Wide / 7.9 m Deep 90.8 m long including Heliport
Cantilever Envelope	21.4 m x 4.6 m x 4.6 m
Draft	4.9 m Transit
Displacement	11,700 mt at Load line
Variable Load	2,010 mt Transit 2,726 mt Drilling
Accommodations	102 Persons
Helideck	S61N & S92
Max. Water Depth	Up To 106.7 mt
Max. Drilling Depth	9,144 m
Legs	3 x 145.5 m Square Truss 128 m Useable Below Hull
Legs Spacing	43.3 m Transverse 39.3 m Longitudinal
Spud cans	14 m Diameter
Jacking System	LeTourneau 16 x Pinions / Leg
Mooring Winches	2 x NOV Amclyde JU-36 67 kW 22.7 mt Pull
Mooring Lines	2 x 609.6 m 38.1 mm Diameter IWRC
Anchors	2 x Flipper Delta 5 mt

STORAGE CAPACITIES

Fuel	322 m ³
Drill Water	1,799 m ³
Potable Water	264 m ³
Liquid Mud	541 m ³
Base Oil	179 m ³
Brine	116 m ³
Bulk Bentonite / Barite	192 m ³
Bulk Cement	144 m ³
Sack Storage	5,000 Sacks

DRILLING PACKAGE

Top Drive	NOV TDS-8SA Rated for 680 mt Hoisting Capacity Max. Continuous Torque 84,739 nm
Drawworks	National 1625 UBDE w/ 4.12 cm Drill Line. Maximum Line Pull: 12 Lines of 784 mt
Rotary Table	NOV-495, 1.25 m, 680 mt
Tubular Handling	IR NOV ST-120, M/U 135 Km
Derrick	NOV Drecto 51.8 m Tall with 9.75m x 10.7m Base, 909 mt Gross Nominal Capacity
Mud Pumps	3 x LEWCO w-2214, 1633 kw
HP Mud System	Rated for 517 Bar
Shale Shakers	4 x Brandt VSM 300 1 x Brandt King Cobra Mud Cleaner

WELL CONTROL

BOP (Low Pressure)	1 X Annular Shaffer Spherical 53.975 cm -137 bar 2 x Ram Cameron Type U 53.975 cm - 137 Bar 1 X Blind/Shear ram Cameron 52.7 cm - 207 Bar
BOP (High Pressure)	1 x Annular Cameron Type DL 34.6cm - 689 Bar 2 x double ram Cameron Type U 34.6cm – 689 Bar
Diverter	1 x Shaffer Spherical 76.20 cm, 69 Bar
BOP Handling	2 x Ingersoll-Rand 75 mt Hoist
Choke & Kill Manifold	WOM 1,034 Bar (15,000 psi)
Conductor Tensioning	Claxton Hydraulic 4 x Lift Points Total Tension 200 mt

CRANES

Primary Cranes	1 x Seatrax S5624 33.6 m boom, Port 43.9 mt @ 7.6 mt Radius. 2 x LeTourneau PCM120SS, 30.5m boom 45mt @ 6.7mt radius, Main boom, 9.1mt @30.5m radius, Auxiliary boom, STBT and AFT
----------------	---

POWER

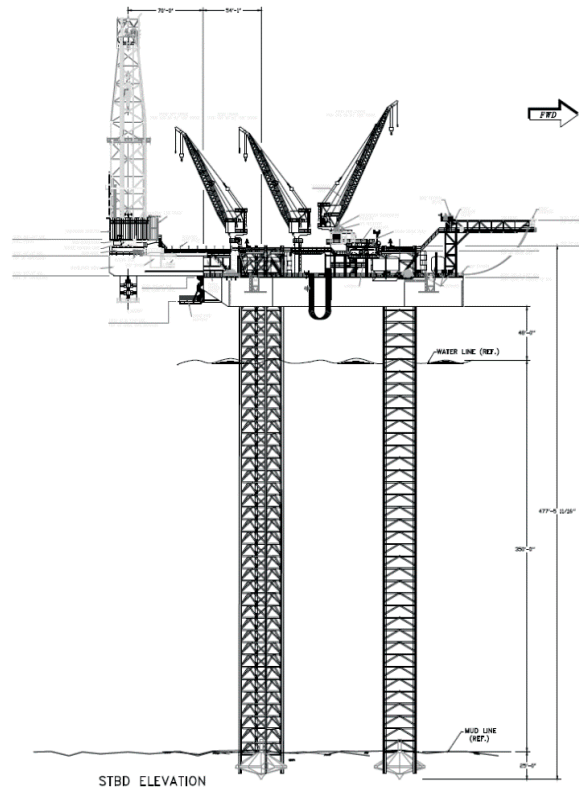
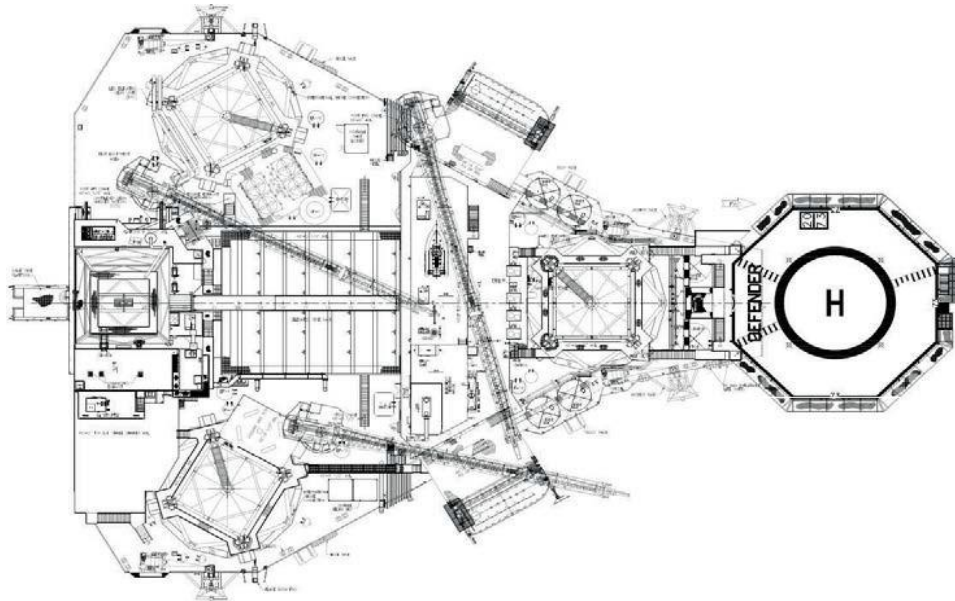
Main Engines	4 x Caterpillar 3516B HD 1,603 kW Diesel Engines
Main Generators	4 x Baylor 1,500 kW
Emergency Power	1 x Caterpillar 3516B HD 1,603 kW Diesel Engine (In addition to 4 Main Engines)

Further information: +52 938 135 75 70

The above information is intended for general reference only. All equipment and specifications are subject to change at any time. Revised December 6th, 2024

DEFENDER

The Defender is an Independent Leg Cantilever Jack-Up with operational history in Asia and the Gulf of Mexico.



Further information: +52 938 135 75 70

The above information is intended for general reference only. All equipment and specifications are subject to change at any time. Revised December 6th, 2024